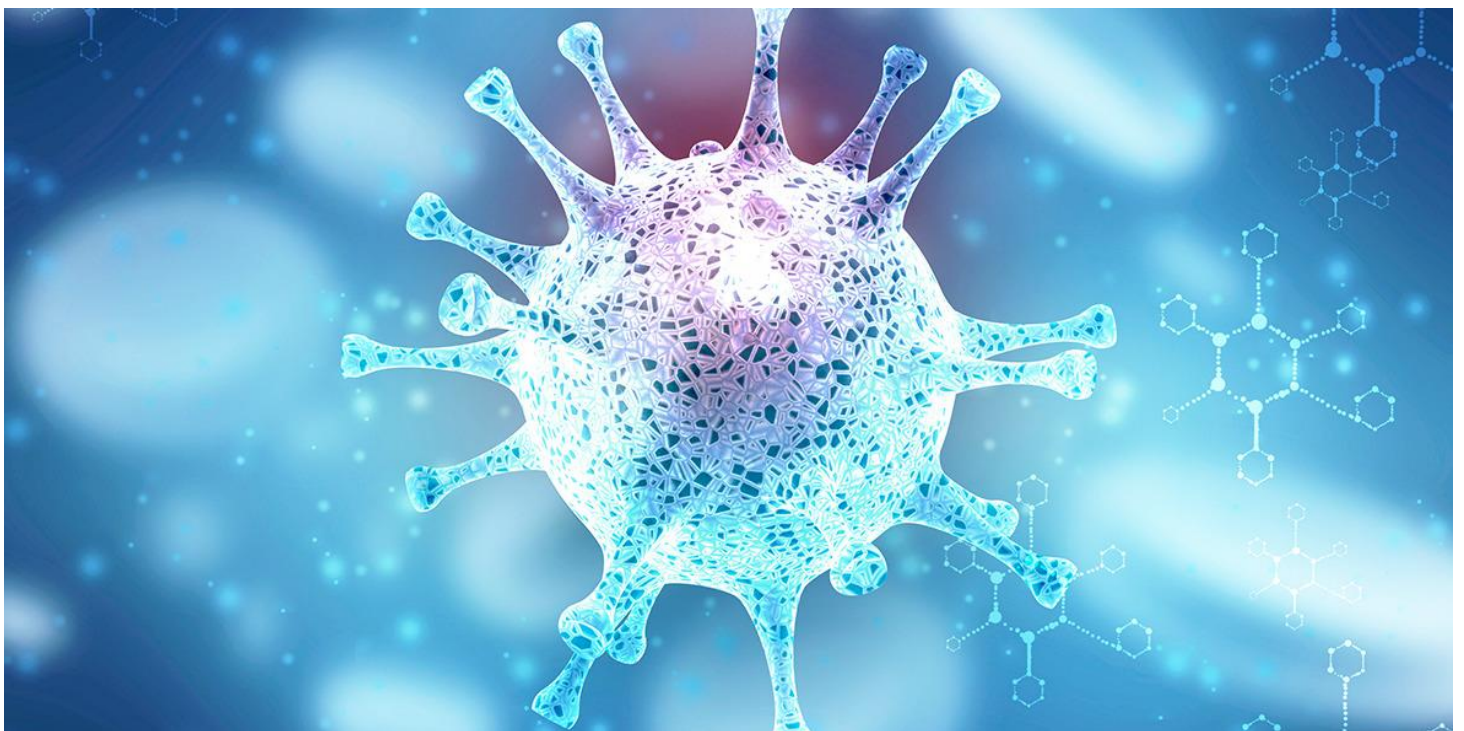


# Literature List – Haematology parameters in COVID-19

Customer information



**Date:** June 2021  
**Subject:** Literature List – Haematology parameters in COVID-19  
**Issued by:** Scientific Customer Services & Marketing  
**Number:** 2021 - 02  
**Note:** Whether references are given in British or American English depends on the original.

**NEW**

New entries are highlighted by this icon.

COVID-19 is an emerging, rapidly evolving pandemic.

Available literature is changing quickly, and studies summarised here may not represent the latest status of knowledge. Please consider that conclusions of articles of this list may be based on low sample numbers or manuscripts that are not peer-reviewed yet (pre-prints).

## Table of Contents

<b>Original articles</b>	<b>3</b>
<b>Single case reports</b>	<b>7</b>
<b>Review articles</b>	<b>8</b>

## Original articles

NEW

### **Dennison D *et al.* (2021)**

Circulating activated neutrophils in COVID-19: An independent predictor for mechanical ventilation and death.

Int J Infect Dis; 106: 155

[https://www.ijidonline.com/article/S1201-9712\(21\)00284-8/fulltext](https://www.ijidonline.com/article/S1201-9712(21)00284-8/fulltext)

**What we see as the essence:** In multivariable regression analyses NEUT-RI (OR = 1.22) was a statistically significant predictor at admission for a later need of mechanical ventilation and death in COVID-19 positive patients among others. NEUT-RI cut-off value for mechanical ventilation was 52 FI (44% sensitivity, 88% specificity; AUC= 0.67).

### **Martens R *et al.* (2021)**

Hemocytometric characteristics of COVID-19 patients with and without cytokine Storm syndrome on the Sysmex XN-10 hematology analyzer.

Clin Chem Lab Med; 59(4): 783

*Free online:* <https://www.degruyter.com/document/doi/10.1515/cclm-2020-1529/html>

**What we see as the essence:** A study on the haemocytometric characteristics of COVID-19 patients revealed that a cytokine-storm syndrome was associated with higher AS-LYMPH, RE-MONO and monocyte fluorescence.

### **Linssen J *et al.* (2020)**

A novel haemocytometric COVID-19 prognostic score developed and validated in an observational multicentre European hospital-based study.

Elife; 9: e63195

*Free online:* <https://elifesciences.org/articles/63195>

**What we see as the essence:** The intention of the prognostic score is to support the management of COVID-19 patients. Score values generated within the first three days of hospital admission can predict clinical severity in COVID-19 patients over the next two weeks. The score performance was shown to be superior to single parameters or parameter ratios.

### **Foy B et al. (2020)**

Association of Red Blood Cell Distribution Width With Mortality Risk in Hospitalized Adults With SARS-CoV-2 Infection.

JAMA Netw Open; 3(9): e2022058

*Free online:* <https://jamanetwork.com/journals/jamanetworkopen/fullarticle/2770945>

**What we see as the essence:** A retrospective analysis from four US hospitals associated an elevated red cell distribution width (RDW) at admission and an increasing RDW during hospitalisation with increased mortality risk in COVID-19 patients, and identified RDW as an independent mortality risk factor.

### **Rolla R et al. (2020)**

Reduced activity of B lymphocytes, recognised by Sysmex XN-2000™ haematology analyser, predicts mortality in patients with coronavirus disease 2019.

Int J Lab Hematol; 43(1): e5

*Free online:* <https://onlinelibrary.wiley.com/doi/10.1111/ijlh.13331>

**What we see as the essence:** The antibody-synthesizing lymphocyte count (AS-LYMP#) together with age, C-reactive protein (CRP) and creatinine level was identified as an independent predictor of in-hospital mortality in COVID-19 patients.

### **Lapic I et al. (2020)**

Cell population data: Could a routine hematology analyzer aid in the differential diagnosis of COVID-19.

Int J Lab Hematol; online ahead of print

*Free online:* <https://onlinelibrary.wiley.com/doi/10.1111/ijlh.13368>

**What we see as the essence:** A letter to the editor that describes the detailed analysis of cell population data (CPD) from an XN-1000 in COVID-19 and non-COVID-19 patients. CBC parameters do not present with significant differences. The CPD parameters present with significant differences, with the most pronounced the elevated LY-WZ.

### **Urrechaga E et al. (2020)**

Complete blood counts and cell population data from Sysmex XN analyser in the detection of SARS-CoV-2 infection.

Clin Chem Lab Med; 59(2): e57

*Free online:* <https://www.degruyter.com/view/journals/cclm/ahead-of-print/article-10.1515-cclm-2020-1416/article-10.1515-cclm-2020-1416.xml>

**What we see as the essence:** A letter to the editor that describes a categorisation of patients with infection/fever into distinct groups based on statistical analyses of complete blood count and cell population data (CPD) from an XN analyser. 93.5% of COVID-19 patients and 100% of non-COVID-19 patients were correctly classified. The authors suggested a flag for COVID-19 infection, based on the neutrophil-to-lymphocyte ratio (NLR) and CPD values.

### **Santotoribio J *et al.* (2020)**

Evaluation of Routine Blood Tests for Diagnosis of Suspected Coronavirus Disease 2019.  
Clin. Lab; 66(9)

*Free online:* <https://www.clin-lab-publications.com/article/3504>

**What we see as the essence:** A descriptive diagnostic study that evaluated several routine blood tests for the diagnosis of COVID-19 at hospital admission. Lymphocytes, eosinophils, ferritin, LDH, D-dimer and hsCRP were included in the diagnostic criteria that identified suspected COVID-19 patients with a sensitivity of 91% and a specificity of 47%.

### **Cohen A *et al.* (2020)**

Immature platelets in patients hospitalized with Covid-19.  
J Thromb Thrombolysis; 30: 1

*Free online:* <https://link.springer.com/article/10.1007/s11239-020-02290-6>

**What we see as the essence:** Patients with COVID-19 have increased immature platelets parameters (IPF, IPF#) compared to stable patients with cardiovascular risk factors. As the disease progresses IPF and IPF# are increased also compared to acute myocardial infarction patients.

### **Osman J *et al.* (2020)**

Rapid Screening of COVID-19 Patients by White Blood Cells Scattergrams, a Study on 381 Patients.  
Br J Haematol; 190(5): 718

*Free online:* <https://onlinelibrary.wiley.com/doi/abs/10.1111/bjh.16943>

**What we see as the essence:** A specific pattern of WDF scattergram, the “sandglass shape” pattern of lymphocyte population, was investigated in a cohort of 381 patients and exhibited a sensitivity and specificity of 85.9% and 83.5% for identifying COVID-19 infection, respectively.

### **Yip CYC *et al.* (2020)**

Temporal changes in immune blood cell parameters in COVID-19 infection and recovery from severe infection.

Br J Haematol; 190(1): 33

*Free online:* <https://onlinelibrary.wiley.com/doi/10.1111/bjh.16847>

**What we see as the essence:** The results show that CBC including extended parameters about activated lymphocytes may be a valuable tool to triage patients with COVID-19. AS-LYMP%L (as a percentage of lymphocytes) yielded the best area under the receiver operating characteristic curve for predicting severe disease.

**Wang Z *et al.* (2020)**

High-fluorescent lymphocytes are increased in patients with COVID-19.  
Br J Haematol; 190(2): e76

*Free online:* <https://onlinelibrary.wiley.com/doi/10.1111/bjh.16867>

**What we see as the essence:** A retrospective analysis of patients from the epicentre of the COVID-19 outbreak in Wuhan, China showed that while lymphocyte (L) counts were progressively decreased as disease severity increased, high-fluorescent lymphocyte (HFL) count and HFL/L ratio were increased in mild and severe cases compared to healthy controls.

**Zhang C *et al.* (2020)**

Decreased "WBC\*LYM" was observed in SARS-CoV-2-infected patients from a fever clinic in Wuhan.  
Chem Lab Med; 58(7): 1152

*Free online:* <https://www.degruyter.com/view/journals/cclm/58/7/article-p1152.xml>

**What we see as the essence:** Retrospective CBC+DIFF data analysis from a fever clinic in Wuhan from February 2020 (mid-Corona-pandemic in China) to evaluate the diagnostic value of haematologic parameters in suspected COVID-19 patients. The combination parameter of WBC and LYMPH (WBC\*LYM) showed the best performance data for the quick evaluation of the patients' disease severity and whether the patient is likely to have COVID-19 or not.

## Single case reports

### **Gérard D *et al.* (2020)**

SARS-CoV-2: A New Aetiology for Atypical Lymphocytes.

Br J Haematol; 189(5): 845

[Free online: https://onlinelibrary.wiley.com/doi/full/10.1111/bjh.16730](https://onlinelibrary.wiley.com/doi/full/10.1111/bjh.16730)

### **Fan BE *et al.* (2020)**

COVID-19 and mycoplasma pneumoniae coinfection.

Am J Hematol; 95(6): 723

[Free online: https://onlinelibrary.wiley.com/doi/full/10.1002/ajh.25785](https://onlinelibrary.wiley.com/doi/full/10.1002/ajh.25785)

### **Foldes D *et al.* (2020)**

Plasmacytoid lymphocytes in SARS-CoV-2 infection (Covid-19).

Am J Hematol; 95(7): 861

[Free online: https://onlinelibrary.wiley.com/doi/full/10.1002/ajh.25834](https://onlinelibrary.wiley.com/doi/full/10.1002/ajh.25834)

### **Mitra A *et al.* (2020)**

Leukoerythroblastic Reaction in a Patient With COVID-19 Infection.

Am J Hematol; 95(8): 999

[Free online: https://onlinelibrary.wiley.com/doi/full/10.1002/ajh.25793](https://onlinelibrary.wiley.com/doi/full/10.1002/ajh.25793)

## Review articles

### **Khartabil TA *et al.* (2020)**

A summary of the diagnostic and prognostic value of hemocytometry markers in COVID-19 patients.  
Crit Rev Clin Lab Sci; 57(6): 415

[Free online: https://www.tandfonline.com/doi/full/10.1080/10408363.2020.1774736](https://www.tandfonline.com/doi/full/10.1080/10408363.2020.1774736)

### **Nokhostin F *et al.* (2020)**

Evaluation of Prognostic/Diagnostic Value of Hematological Markers in the Detection of Inflammation in Coronavirus Disease: A Review Study.  
J Adv Med Biomed Res; 28(128): 171

[Free online: http://zums.ac.ir/journal//article-1-5965-en.html](http://zums.ac.ir/journal//article-1-5965-en.html)